

Triangles

Raise My
MArks

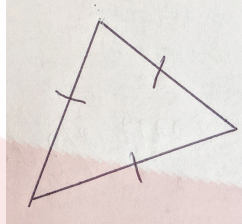
RaiseMyMarks.com

2020

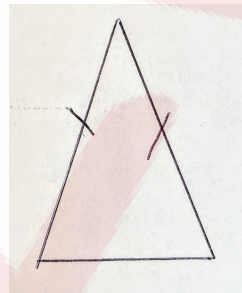
Triangles

Now that we know about angles we can define a few triangles. There are two ways to classify a triangle, by its angles or sides. Let's consider the sides of a triangle.

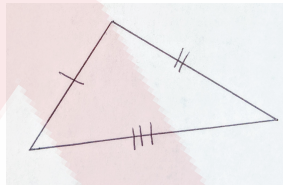
1. **Equilateral triangle:** all three sides are equal in length.



2. **Isoceles triangle:** two sides of triangle are equal in length.

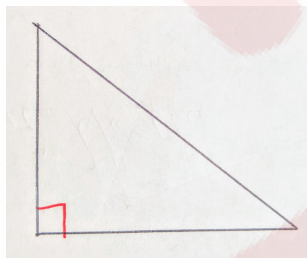


3. **Scalene triangle:** All three sides of triangle have different lengths.

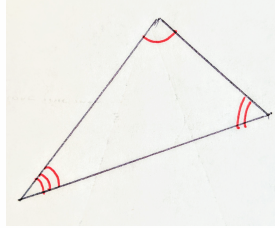


Let's now consider angles of a triangle.

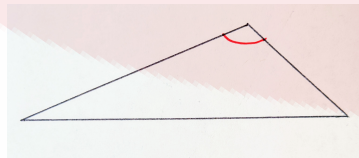
1. **Right angle triangle:** There is a right angle in a triangle.



2. **Acute triangle:** All angles in the triangle are acute.



3. **Obtuse triangle:** One angle of the triangle is obtuse.



Exercises

Indicate the type of triangle for each of the triangles below.

