

Surface Area

Raise My
MA **rks**

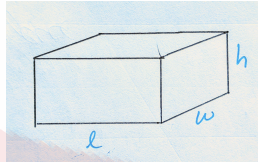
RaiseMyMarks.com

2020

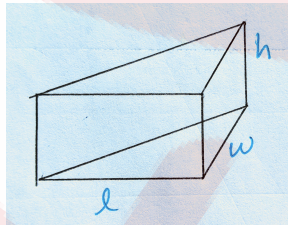
Surface Area

The surface area of a 3 - D shape is the total area on the surface of the object.

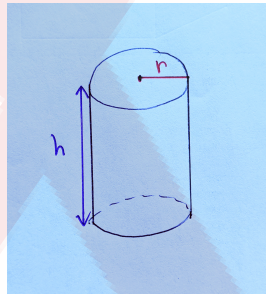
Rectangular Prism Surface area = $SA = 2(lw + lh + wh)$



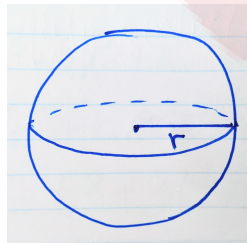
Triangular Prism Surface Area = sum of the areas of the faces



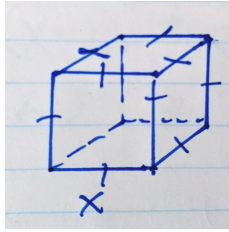
Cylinder Surface Area = $SA = 2\pi r^2 + 2\pi rh$



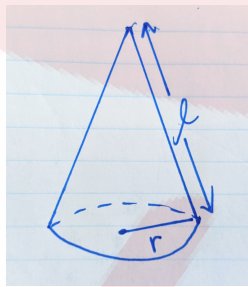
Sphere Surface Area = $SA = 4\pi r^2$



Cube Surface Area = $SA = 6x^2$



Cone Surface Area = $SA = \pi r^2 + \pi r l$



Exercises

Find the surface area of the following shapes:

