

Perimeter and Area

Raise My
MA **rks**

[RaiseMyMarks.com](https://www.RaiseMyMarks.com)

2020

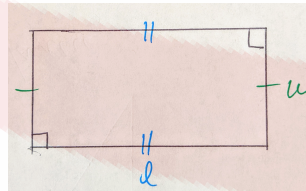
What is the perimeter of a shape?

What is the perimeter of a shape? The perimeter is the distance around a shape. Regular "standard" shapes have formulas for calculating the perimeter. Let's consider some of the standard shapes.

1. Rectangle

$$P = 2l + 2w$$

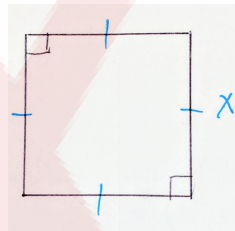
$$\text{Area} = A = lw$$



2. Square

$$P = 4x$$

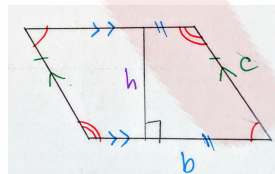
$$\text{Area} = A = x^2$$



3. Parallelogram

$$P = 2c + 2b$$

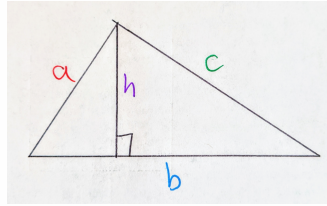
$$\text{Area} = A = bh$$



4. Triangle

$$P = a + c + b$$

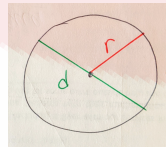
$$\text{Area} = A = \frac{1}{2}bh$$



5. **Circle** Note that for a circle the perimeter is also called the *circumference*.

$$P = 2\pi r = \pi d = C$$

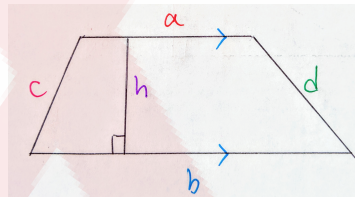
$$\text{Area} = A = \pi r^2$$



6. **Trapezoid**

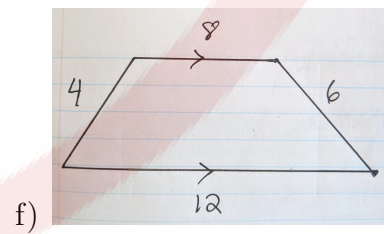
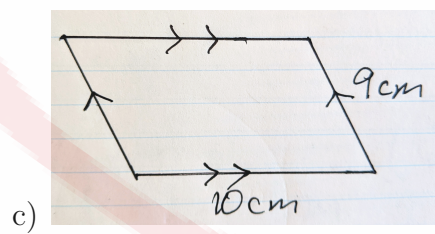
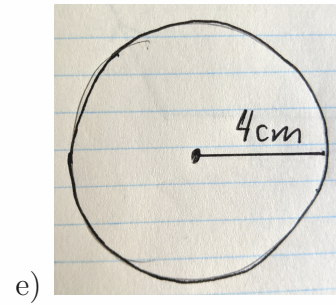
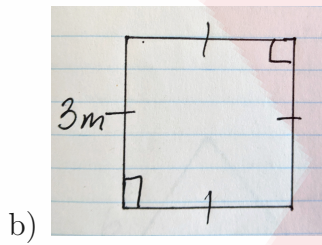
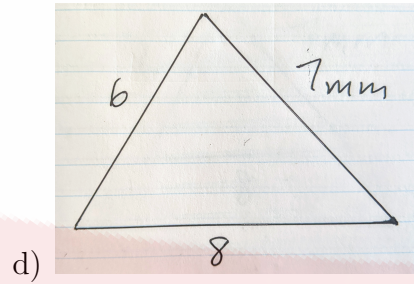
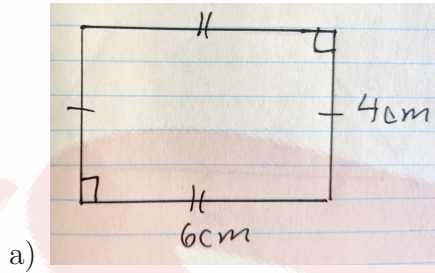
$$P = a + b + c + d$$

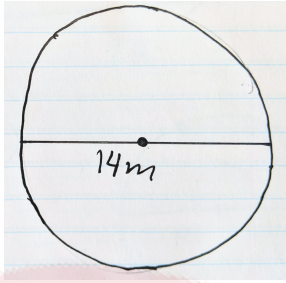
$$\text{Area} = A = \frac{1}{2}(a + b + h)$$



Exercises

Find the perimeter for the following shapes:





g.)